



ANNUAL REPORT 2021

New Zealand Catholic Education Office Limited
Te Tari Mātauranga Katorika o Aotearoa



Strategic Priorities





Table of Contents

3	Chairperson's Report
6	CEO's Report
16	New Zealand's Catholic Schools
20	Report of the Board of Directors
21	Summary Consolidated Financial Statements
26	Independent Auditor's Report
28	Directory

Chairperson's Report

*for the shareholders of New Zealand Catholic Education Office Limited
for the year ended 31 December 2021*



Geoffrey Ricketts

It is with pleasure that I report to the shareholders on the work of NZCEO during 2021.

The impact of the pandemic has once again shaped the way that NZCEO has carried out our work and the events we have been able to plan and facilitate in 2021. The lessons of 2020, the consistent use of zoom video conferencing and the ability for some limited travel across the country have ensured that the Office has been able to carry out the large majority of what was planned for this year.

The CEO and his team have been able to lead a number of key initiatives that have made a difference to state integrated schools and our Catholic network. Despite the impact of the pandemic, proprietors, school boards and schools have been well served by the staff at NZCEO and by my fellow board members. There have been many highlights which I hope to capture in my report.

Safeguarding Catholic Character

The appointment of a Manager of Special Character in 2020 continues to ensure Catholic character is at the forefront of the day to day work in the Office. There have been a number of key initiatives developed and completed this year including (a) the development of a culturally responsive Education Review Document which was approved by the New Zealand Catholic Bishops Conference (NZCBC), (b) a formal programme of development and support for all national reviewers, (c) a series of three symposia using both national and international Catholic academics promoting the formation of staff in Catholic schools and (d) review and development of our communication channels such as Lighting New Fires and Facebook.

The training and development of school leaders for the Catholic school network has been identified as a priority for NZCEO. A National Aspiring Leaders Programme was initiated (after a break in 2020 due to the pandemic) and twenty-seven aspiring leaders enrolled and completed the programme that continues into 2022. A national Catholic First Time Principals' programme was also facilitated with up to thirty participants over the course of the year. The development of Catholic school leaders is an area that the board view as priority work for the Office and an area we are prepared to put further resources into.

The continuing COVID-19 pandemic has impacted on some of the Catholic character events planned in 2021. Catholic Schools Day in September was challenging as Auckland, Waikato and some parts of Northland went into COVID-19 lockdowns. Despite this, Catholic schools across the country made a fabulous effort to promote their communities and NZCEO was inundated with photos and event information from schools. NZCEO was gratified to see this effort and thank all our school communities for showing such a positive attitude at a time of challenge.

It is unfortunate that the Catholic Convention scheduled for 2022 has been postponed as planning for the event was moving along at pace. However, managing health and safety and the financial risk of the event being affected by a move to a 'Red Light' on the new traffic light framework resulted in a late decision to postpone and defer the event to 2023.

Providing Advice & Support

The Board and staff at NZCEO reviewed the current strategic plan and developed a new strategic vision for 2022-2024. Much effort was spent engaging with our fellow service partner Te Kupenga identifying and clarifying the function and role of each organisation and developing mechanisms for working more collaboratively in service of the NZCBC. This relationship is one that we value highly and has resulted in a number of positive outcomes including a new relationship between Te Kupenga and the Australian Catholic University that will allow the provision of a post graduate Catholic leadership qualification in 2022. This will be well received by aspiring leaders in our Catholic schools.

The Board is pleased that efforts to engage and collaborate with the New Zealand Schools Trustees

Association (NZSTA) has progressed to a point where a Memorandum Of Understanding (MOU) between both organisations is likely to be signed in early 2022. Cooperation in the development of a governance framework for state integrated schools is the first significant piece of work being carried out as this relationship strengthens. NZCEO have identified some concerns regarding how Schedule 6 of the current Education & Training Act and its protection of special character is interpreted alongside other legislation impacting on school boards such as employment law. Therefore, NZCEO made the decision to collaborate with NZSTA and provide our expertise for the benefit of school boards in the state integrated sector.

In 2021, NZCEO initiated a process in support of teachers employed as advisors in our Catholic Diocese. Neal Swindells (former principal of a Catholic secondary school) was contracted to facilitate a professional growth cycle for religious education advisers (REAs) and as a result four were able to apply and successfully retain their teacher registration for another three years. This process will continue in 2022 and will support a Diocese to employ Catholic teachers while ensuring they can return to teaching at an appropriate time.

Ensuring Strong Advocacy

In 2020, the Association of Proprietors of Integrated Schools (APIS) signalled to the Government that it had been unfairly treated by being denied access to the School Investment Package (SIP) for capital maintenance that was provided to state schools. Subsequently, NZCEO filed judicial papers against the Minister of Education for a review of this decision. However, after continuing discussions the Minister of Education made a budget announcement in May that the Government had agreed to provide an Essential Property Maintenance Package (EPMP) to state integrated schools resulting in NZCEO withdrawing the judicial review. The EPMP funds have provided \$52.8m of funding for capital maintenance work in the state integrated school sector. The Office developed under urgency the necessary processes and systems to approve and transfer these funds to proprietors. At years end, over \$12m of EPMP funds have been approved by NZCEO for qualifying proprietor projects despite the challenging construction environment.

APIS and NZCEO have continued to work with proprietors to process applications for claiming the property funding entitlement for Learning Support Coordinators. The complex construction environment was a challenge at

times particularly as it was a 'use it or lose it' package with a challenging deadline. With the support of NZCEO, proprietor applications received by the end of 2021 deadline represent a total spend of \$5.5m and this was a pleasing outcome.

In 2020, APIS agreed to work with the Ministry of Education and proprietors to develop a more transparent and readily accessible system for non-preference places in our schools. This work took longer than expected due to workload pressures and stress in schools where they were coping with many issues related to managing the pandemic. APIS prioritised this work in the early part of 2021 and with an increased level of communication and support this work was completed in the first half of the year. The commitment to completing this matter highlighting our willingness to work with this government as a constructive partner in state education provision. However, APIS are very clear, as is the Ministry of Education, that they have no right to intervene in the decision on preference places and the rights of the proprietor in preserving special character.

NZCEO became a party to a judicial review actioned by Mr Guy Gifford in late 2021. Mr Gifford is seeking a judicial review over proprietors rights to (a) request donations other than for buildings, land and debt, and (b) donate funds to a school board. This judicial review has become protracted and as at the end of December 2021 Mr Gifford has yet to agree to a preliminary issue so there is yet to be determined a discrete issue which could go before the Court. NZCEO is committed to advocating on behalf of our proprietors and strongly believes that current legislation supports the rights of proprietors to both request donations and donate funds to school boards.

Ensuring a Strong Financial Position

The board of NZCEO has been highly engaged in the development of a new funding model designed to fit the approach to attendance dues and policy one pooling that the New Zealand Catholic Bishops Conference (NZCBC) requested NZCEO to develop. In January 2021, a Working Group was formed with representation from NZCBC Finance, NZCEO, proprietor trust boards and ex-officio support and this group met on a four-to-six-week basis throughout the year to progress this work. The challenge for the Working Group was developing a set of policies, procedures and structures based on the common good while at the same time increasing the level of subsidiarity for proprietors and ensuring transparency in the decision-making process.



Following a process of consultation with all proprietors, NZCEO provided a report to NZCBC on behalf of the Working Group and our Bishops were unanimously supportive of the recommendations. The new funding model will feature:

- Te Puna Waihangā – a common good attendance dues pooling scheme using a national rolling ten year property growth plan where growth projects are prioritised through collaboration between proprietors and NZCEO.
- Te Puna Tāmata – a national emergency policy one pooling scheme with a cap of \$20m providing a grant to a proprietor facing a serious emergency or catastrophic event.
- National common good insurance scheme focused on equalising insurance rates for school property across the country. This scheme will be supported by a subsidy from Te Puna Waihangā to facilitate the reduction of insurance costs for those most affected by high insurance rates.

Financial modelling of the new scheme based on the ten year property growth plans provided by each proprietor identified that the new scheme will have the capacity

to meet the growth plans of our proprietors with some smoothing over the next ten years. NZCEO is grateful to the members of the Working Group for their generous service and to our Catholic proprietors with all diocesan proprietors and the majority of proprietor trust boards committing to the new scheme.

As Chairperson I extend my sincere gratitude to my fellow board members and to Kevin Shore and the NZCEO team. Collectively they bring wide experience and expertise and a passion to protect and serve Catholic education. The board and staff of NZCEO are very proud to play their part in support of ensuring our Catholic schools continue to deliver the authentic, faith-based quality education expected by our Bishops, proprietors and Church community.

Geoffrey Ricketts
Chairperson
NZCEO

CEO's Report

on the outputs of the Office, arising from the Strategic Plan

CEO's Report continued



Dr Kevin Shore

Introduction

This report covers the work that was the focus of our Strategic Plan in 2021. While some of this work is specifically related to Catholic schools, it is important to note that NZCEO has responsibility for the Association of Proprietors of Integrated Schools (APIS), and much work is done with the Government for the whole state integrated school sector. This is important to our mission and is a significant workstream for staff at NZCEO.

The significant staff restructuring developed by the previous CEO in conjunction with the board over 2019 and 2020 came to fruition during 2021. These decisions have resulted in the Office increasing its ability to respond to the varied and multifaceted work that has characterised the last twelve months. The appointment of a Manager of Special Character has strengthened the ability of NZCEO to support the key goals of evangelisation and formation. The role of the Manager of Operations and Projects has also had a significant positive benefit in meeting many challenges in 2021. This included the development at pace of a set of processes and guidelines to support the EPMP funding. Despite the impact of the pandemic on business as usual, NZCEO has shown an ability to be agile and effective in meeting the goals and targets set within NZCEO's annual plan.

The most pleasing aspect of 2021 has been how NZCEO has been able to respond to the challenging COVID-19 environment with only a limited negative impact on the effective operation of the organisation. The CEO acknowledges the commitment of all staff to support our stakeholders and meet the expectations they have of NZCEO. The pleasing outcomes achieved in 2021 can largely be contributed to the competence of the staff and their 'can do' attitude.

Leadership

Supporting governance and leadership to continually enhance Catholic Character

Following the unfortunate cancellation of the 2020 national Aspiring Leaders Programme (due to the COVID-19 pandemic), there was increased motivation to get this programme back on the calendar for 2021. The 2021 programme started with a two-day residential at the Home of Compassion on the 24-25 May with twenty-seven participants in attendance. This was followed up by three remote sessions facilitated by NZCEO. These sessions had strong levels of participation reinforcing the need for a national programme such as this. It is intended that this cohort will continue for a further six months in 2022 before concluding with a one-day face to face programme.

The Office has also facilitated a First Time Catholic Principals' Programme with as many as thirty-four participants. There have been several experienced Catholic principals resign over the period 2020/2021 and this national programme allowed NZCEO staff to interact with these new principals while also

positively supporting their growth into the role. NZCEO has facilitated three remote professional development sessions for this group in 2021 supported by a range of past and present principals. These professional growth opportunities have been developed with the full input of these new principals and focused on aspects of the principal's role where they wanted support.

The Office intervened in support of diocesan education managers and school boards due to concerns that current governance resources do not reflect the special character framework that is the key foundation of state integrated schools. Legislation particular to state integrated schools is not well understood by those commercial companies developing policy frameworks for state and state integrated schools and NZSTA has limited staff with the required knowledge in this area. Consequently, NZCEO has partnered with NZSTA to develop a governance policy framework that will support our school boards of Catholic state integrated schools and school boards in the wider APIS network. The last stages of this work should be completed in early 2022.

NZCEO has worked closely with Te Kupenga in looking to re-establish post graduate Catholic leadership qualifications given the popularity of these qualifications for those seeking to lead in Catholic schools. We are

grateful to Dr Areti Metuamata, Dr John Evangelista and latterly Dr John Kleinsman from Te Kupenga for their work in re-establishing a previous relationship with the Australian Catholic University and a post graduate qualification for Catholic leaders will once again be available in 2022. NZCEO has also worked with Te Kupenga and the Bethlehem Tertiary Institute in developing a partnership model for teacher training for our Catholic graduates. There is potential for this to fill a current gap in providing potential teachers for the Catholic school sector with a faith-based teacher education programme.

The one major piece of work that NZCEO did not complete in 2021 was the development of a video resource that captures the history of the integration agreement. Lockdowns, changing alert levels and urgent workstreams such as the EPMP funding resulted in this work being deferred to 2022. There is a clear need for this resource. It has become apparent that many of our proprietors and school boards have only a limited understanding of the issues leading up to the Private Schools Conditional Integration Act (PSCIA), the intentions behind the Act and the impact on practice of subsequent agreements including Policy One funding. The Office is committed to completing this key piece of work in 2022.

Evangelisation

Supporting schools in building the faith experience for students and families

The redevelopment of the NZCEO website and Facebook site carried out in 2020 has been used to great effect in 2021. The NZCEO Facebook page has been regularly updated by staff with content from our Catholic state integrated schools. Catholic Schools Day in September 2021 was a case in point with many schools sharing the activities they undertook to celebrate this special day. Catholic schools shared their pictures and videos capturing students celebrating their Catholic identity and staff at NZCEO were able to load these onto our Facebook page – providing a collage of wonderful memories.

Catholic Schools Day 2021 was beset with all sorts of challenges with lockdowns and changing alert levels turning planning for this event upside down. NZCEO decided to go ahead with the event but gave schools complete discretion (while supporting them with resources) on what that might look like for them whatever their challenges. The resulting efforts were more than we were expecting, and the day was a resounding success and a celebration of what is best about Catholic education. NZCEO would like to thank our bishops, diocesan education teams, principals and schools for their support in making this day such a faith filled, uplifting and positive day of celebration.

The Office has continued to review Lighting New Fires (LNF) and has encouraged Catholic educators in Aotearoa to provide contributions. This resulted in some current principals taking up the opportunity to contribute but it remains an area where many are reticent and NZCEO will continue to encourage our Catholic leaders to take up this opportunity. Recent efforts to strengthen our

partnership with Te Kupenga and National Centre for Religious Studies (NCRS) has resulted in their increased interest in using LNF to communicate to the wider Catholic education community. The intention is to rebrand LNF in 2022 and further develop this key communication vehicle.

The NZCEO board and staff engaged with NZCBC, Te Kupenga and NCRS in developing a new three-year strategic plan for 2022-24. This plan has tightened and clarified the scope of the work to be undertaken by NZCEO. This will avoid replicating work streams carried out by the other organisations that service NZCBC. The strategic plan clearly expresses the vision, mission and purpose of NZCEO and outlines the strategic objectives that will be the focus of our work over the next three years. The Board and staff at NZCEO are pleased with the final result and are looking forward to continuing to support our Catholic proprietors and school communities to provide high quality education with a Catholic character.

Partnership

Working constructively with stakeholders and schools to represent and inform

Having successfully navigated the COVID-19 challenges of 2020, NZCEO was hoping that 2021 would be a little less challenging. That was not to be the case but many of the lessons of 2020 were able to be applied to our work in 2021 and have become "work as normal". For example, remote meeting technology has enabled NZCEO to increase engagement with several stakeholders leading to a strengthening in relationships with these groups. It has also allowed our Manager of Operations & Projects to work remotely from Christchurch this year returning to Wellington for a few weeks each term to catch up with the rest of the team and progress various workstreams. Microsoft Teams and ZOOM have been invaluable in maintaining daily contact and virtual face to face communication with both the staff, the board and many sector groups that would normally meet face to face.

Like many organisations, NZCEO has also been able to use these new ways of working to promote a stronger focus on environmental sustainability. Using remote meeting technologies and providing staff opportunities to work from home all help to reduce our carbon footprint and maximise the use of our time. That said, travel will continue to be an important means of promoting our work, interacting with proprietors, and strengthening relationships in our sector.

Relationships with stakeholders and partners have been a continual focus with every effort to nurture and enhance these important relationships. While NZCEO continues to meet with key staff in the Ministry of Education each month, it has been very difficult to engage with the Minister of Education. The significant portfolio he has carried as Minister of COVID-19 has challenged the capacity of NZCEO to engage with him with the only face to face meeting happening early in 2021 as the Office was negotiating for the payment of EPMP funds. While this will be an ongoing challenge, our relationship with the Secretary of Education and the Ministry of Education can be considered positive and constructive as we work together in support of state integrated schools.

Meetings with the Post Primary Teachers' Association (PPTA), New Zealand Educational Institute (NZEI), NZSTA, and Education Review Office (ERO) continued to be of importance in maintaining relationships and ensuring the Office was aware of current educational concerns. This attention to relationships allowed, for example, our Catholic character review personnel to benefit from the expertise of ERO in providing professional support in evaluation methodologies. Particular attention has been focused on our working relationship with NZSTA with the CEO having six weekly meetings with the CEO of NZSTA. NZCEO, on behalf of APIS, has drafted a Memorandum of Understanding to more formally outline our relationship moving forward.

A key initiative for the Office in 2020 was the establishment of a process for teachers who work in Diocesan or National Offices to maintain their registration. NZCEO has worked with the Teaching Council of Aotearoa New Zealand to develop a process that makes career choice in these roles more flexible and allows people to move between teaching and local leadership roles. Our Manager of Special Character has now fully implemented this process using a former principal of a Catholic Secondary school to engage diocesan education staff in a professional growth cycle, leading to the NZCEO CEO signing off on their teacher registration applications. In 2021, four of five diocesan education staff have benefitted from this process, and they have appreciated this opportunity to maintain their teacher registration.

NZCEO would like to thank our loyal sponsors, Toshiba NZ, Noel Leeming, OfficeMax and ALSCO for their support throughout 2021. Their generosity despite the challenges of the pandemic has been appreciated. The Office is also pleased to welcome on board the Gallagher Group as an elite sponsor for NZCEO and we thank them for their confidence in, and support of, our organisation.

Formation

Identifying and supporting the formation of leaders and teachers in schools

The New Zealand Catholic Convention which was deferred in 2020 to 2022 has been a significant workstream this year. The convention was scheduled for the 15th to 17th June 2022 and the keynote speakers, workshop presenters and convention master of ceremonies had all been booked and approved by NZCBC. A convention website was constructed, and a major communication push took place in term four to ensure information was available to the Catholic community of New Zealand. In the closing weeks of 2021, due to the imminent likelihood that New Zealand would be placed in a "red traffic light" setting due to the Covid variant Omicron entering the country, the decision was made to postpone the convention until 2023. This change in alert levels created uncertainty and financial risks that NZCEO would not be able to sustain if the convention did not take place.

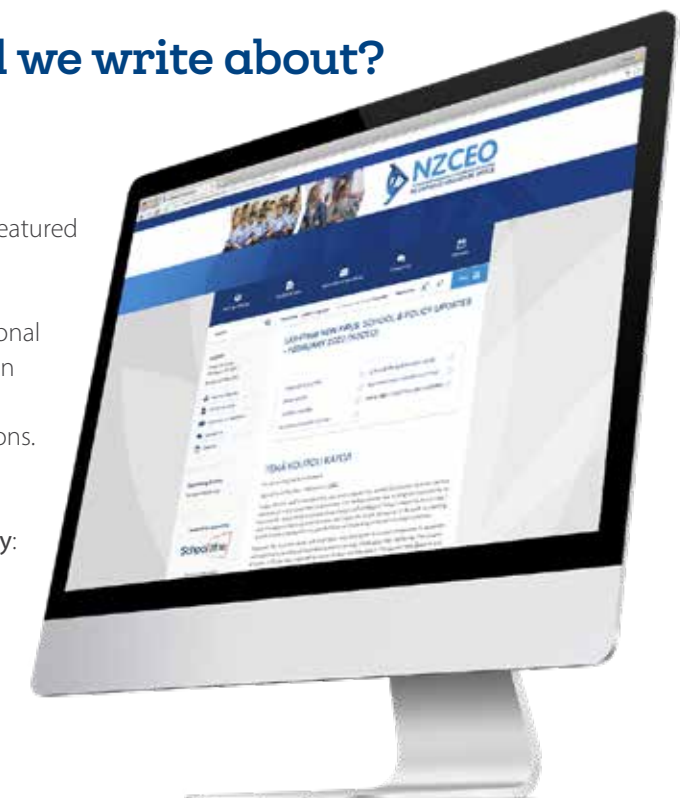
The Manager of Special Character has facilitated the development of a culturally responsive Catholic Education Review Document which was approved by NZCBC in November 2021. This completes a lengthy development and evaluation phase as our Bishops worked towards a process that fits a Katorika Māori framework. Alongside this work, the Manager of Special Character, Rosalie Connors has continued with regular meetings for all Catholic reviewers supporting them in their understanding of the evaluation methodology and practice within the theology of the Catholic church. These opportunities have been highly valued by reviewers across the country and have become part of business as usual in our office and will continue into 2022.

Unfortunately, the COVID-19 pandemic has once again resulted in most scheduled reviews across the country being deferred. As a consequence, the Manager of Special Character has been unable to analyse and evaluate national trends or collate key data to assure proprietors of the impact of current school practices in strengthening the Catholic character in our schools. Pandemic permitting NZCEO looks forward to developing this aspect in 2022.

Lighting New Fires – what did we write about?

Newsletter numbers for 2021

- » **Editorial** in all editions.
- » **NZCEO Updates:** 7 out of 10 editions. Catholic Schools Day featured heavily in first half of the year. Total articles 8.
- » **Governance matters:** 8 out of 10 editions. Total articles 10.
- » **Professional Learning:** 9 out of 10 editions. Catholic Professional Learning and Formation Symposium Series featured heavily in first half of the year. 13 articles in total.
- » **Material submitted by Catholic educators:** 5 out of 10 editions. Three by diocesan or school staff, two by Rosalie Connors, Special Character Manager, NZCEO.
- » **Items of general interest to Catholic education community:** 7 out of 10 editions. Caritas updates featured heavily. 2 editions each featured a school's news.
- » **Welcome of new principals:** At the beginning of each term.
- » **Sponsors:** We featured our sponsors in 5 out of 10 editions.



Engagement

Working constructively with Government and their agencies to advocate, represent and inform

The Office continues to be an important link with the Government and government agencies. During 2021 many of the normal meetings and reference groups moved to a remote format with very few meetings taking place face to face. When face to face meetings could go ahead it made a refreshing change to be able to engage at a more personal level. The CEO is grateful to Nick Pole (CEO ERO), Elise Adams (CEO NZSTA), Melanie Webber (President PPTA) and Liam Rutherford (President NZEI) for their commitment to meet regularly with NZCEO/APIS. In the case of ERO and NZSTA this relationship has enabled strong collaboration and the opportunity to work together on key projects to benefit the state integrated school sector.

The Secretary of Education, Iona Holsted, has included our sector in her regular weekly Peak Body Reference Group zoom meetings. From July onwards these became key meetings as the lockdown in Auckland and changing

alert levels across the country due to the delta variant of COVID-19 increased pressure and stress on our education system. The Ministry of Education was forced into 'just in time' management of the situation and the chance for sector groups including NZCEO to engage in developing processes in support of our schools was appreciated. We are grateful to the Secretary for her willingness to engage with us.

In addition to this, our regular monthly meetings with the state integrated team at the Ministry of Education continued with a mix of face to face and remote meetings. NZCEO is grateful for their continued support and willingness to engage with us on matters of importance to state integrated schools. They respond very quickly to the regular queries from our organisation and this relationship is very important to us.

In most years meetings are an important part of updating and sharing. The following groups have met either by zoom or in person when permitted:

- » National Education Leaders Partnership (Sector Leaders)
- » Peak Body Reference Group
- » Property Reference Group
- » NCEA Reference Group
- » Rural Education Reference Group
- » Technical Development Group
- » Te Rito Sector Advisory Group

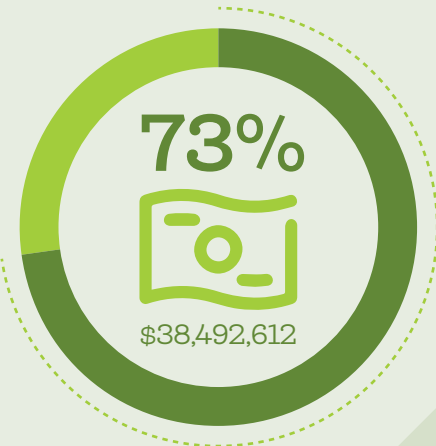
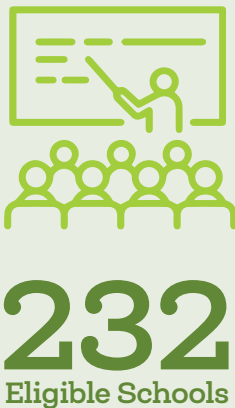
In May 2021, the Labour Government announced through the budget that they would fund a \$52.8m Essential Property Maintenance Package (EPMP). In late 2020, NZCEO had filed for a judicial review of the Minister's decision not to fund state integrated schools with the equivalent School Investment Package (SIP) funds given to state schools totalling \$400m. The announcement to provide EPMP funds to state integrated schools in May resulted in NZCEO withdrawing the judicial review, however, the evidence collected provides extensive information that will prove to be useful in our negotiations with the government in the future.

In 2020, the Ministry prepared a paper for the Minister following comments made in the Tomorrow's Schools review about the pecuniary advantage that state integrated schools had in selecting their open places or non-preference enrolments. The work to resolve this was carried over into 2021. By April 2021 almost all state integrated schools had developed the necessary non preference enrolment policies to ensure that entry to the non-preference places was based on criteria that was easily available for parents. NZCEO is grateful to school boards and principals for engaging in, and completing this work, given the more pressing matters they were dealing with at the time.

NZCEO was delighted to participate in the official opening of Suzanne Aubert Primary at Papamoa in February 2021. The opening of the school represented an outstanding achievement for the Bishop of Hamilton given the challenges of building the school in under twelve months once all consents were signed off. It was a wonderful day of celebration and a credit to the hard work of the Hamilton property team.

NZCEO has continued to work with proprietors to ensure they receive the funding allocated for Learning Support Coordinator offices by Government. This workstream started in 2020 and the Ministry of Education has made it clear that no further funds will be allocated after December 2021. NZCEO is currently working with two diocesan proprietors to ensure that they can meet this deadline as it represents a significant resource for each of them. It is a very difficult construction environment with shortages of materials and tradespeople, and this has not helped. In total, approximately \$4.6m has been distributed to Catholic school proprietors as part of this initiative.

Essential Property Maintenance Package



\$52.8m included in 2021 budget from Government for the Essential Property Maintenance Package for eligible state integrated schools. There are 232 eligible Catholic schools, with a total of \$38,492,612 funds available which represents 73% of the total funding allocated to state integrated schools.

E-Communications



140 electronic communications were sent to the Catholic Network during 2021, with an average open rate of 60%.



Finance

Managing and aligning funding which supports access to state integrated schools

The Office has spent a great deal of time supporting a Working Group preparing and processing funding models for the NZCBC as they worked their way towards an agreement on a future national funding model. This Working Group with representation from NZCBC Finance, NZCEO, Proprietor Trust Boards, and ex-officio support, was entrusted to develop a framework for (a) a national Attendance Dues Pooling Scheme – Te Puna Waihangā, (b) a national Emergency Policy One Pooling scheme with a \$20m cap – Te Puna Tāmata and (c) a national common good insurance scheme focused on equalising school insurance costs across the country.

Given the range of issues and views of proprietors across the network it took some time to work up a proposed framework and a set of procedures and guidelines that emphasised transparency and subsidiarity while ensuring the common good was at the heart of the new scheme. NZCEO is grateful to the members of the Working Group who made every effort to make themselves available for a significant number of face to face and remote meetings over 2021. The proposed model developed for consultation represented the desire by the Working Group to ensure Catholic education continued to thrive over the next two decades.

In the second half of the year the Working Group consulted with all proprietors across the country before making a final recommendation to NZCBC in November 2021. NZCBC replied quickly approving the scheme as recommended by the Working Group. Legal agreement contracts were then developed for those proprietors who decided to participate in the national scheme. At the time of writing all diocesan proprietors have opted into the new scheme.

The EPMP funding package of \$52.8m to state integrated schools was another significant initiative in the financial space. NZCEO on behalf of APIS was asked to develop a framework to approve projects,

facilitate the transfer of funds and report to the Ministry of Education on outcomes. The Manager of Operations and Projects Karen Raitt, developed under urgency a very full and effective response that reduced compliance to a minimum, enabled very quick turnaround of project approval and transfer of funds and provided key data for quarterly reports to the Ministry of Education. She also developed a comprehensive EPMP webpage hosted by APIS containing frequently asked questions, instructions and application forms and the information on eligibility of projects. This webpage proved to be a very helpful site for proprietors. A contractor was employed by NZCEO to process applications and ensure compliance with the parameters set by the Ministry of Education. Along with support from the Office the EPMP workstream is progressing well to date. As of December 2021, \$12m of EPMP work has been approved with \$3m having been transferred to proprietors.

In late 2021, Mr Guy Gifford applied for a judicial review of Ministry of Education guidance allowing proprietors to (a) request donations of parents for things other than land, buildings, and debt, (b) allowing proprietors to donate proprietor funds to a school board. The Judge decided that the issues would likely impact on the state integrated school sector and invited APIS to be part of this proceeding and NZCEO became a second defendant. The concerns for NZCEO and APIS focused on wanting to protect the right of a proprietor to request donations for the purpose of preserving special character and wanting the proprietors' right to donate funds to a school board protected given the many and varied appropriate reasons for this.

The case is still in a stage where Mr Gifford needs to confirm to the court whether he still wishes to continue with the judicial review, and it is unlikely that this case will go to court until at least March 2022.

Conclusion

The requirements of the Shareholders of the Company, our Bishops and other Proprietors, continue to be the highest priority for the work of the Board and the Office. It has been a pleasure to serve our shareholders in Catholic education in 2021.

The team at NZCEO work hard to meet their needs, and those of the country's Catholic schools, their trustees, principals, teachers, students, parishes and the wider community. We acknowledge the Lord and the students as the focus of our work.

Thanks are expressed to the New Zealand Catholic Bishops and their fellow Proprietor Shareholders, along with their agents, for their support and goodwill during the year.

Gratitude is expressed to Geoffrey Ricketts, the Chairperson of NZCEO Limited, and his fellow Directors for their generosity in leading the national Catholic school system. They are guardians and servants of our Catholic education network, and their support is appreciated.

Gratitude is also expressed to the staff of the Office for their dedication and commitment to serving all those involved with the country's Catholic schools.

Mā te Atua e manaaki

KB Shore

Dr Kevin Shore
Chief Executive Officer
NZCEO



The CEO attended conferences and meetings of the following organisations (many conferences in 2021 were cancelled due to the pandemic):

- » Association of Integrated Schools
- » New Zealand Educational Institute
- » New Zealand Principals Federation Conference
- » Hamilton Diocese Principals and DRS Conference
- » New Zealand Catholic Primary Principals' Association Conference
- » Visited integrated schools throughout New Zealand

Participation in the following committees occurred on a regular basis:

- » National Education Leaders Partnership (Sector Leaders)
- » Ministry of Education Peak Body Reference Group
- » Ministry of Education Data Management Group
- » Ministry of Education Network Updates Group
- » Ministry of Education Property Sector Advisory Group
- » Ministry of Education Regional Property Forum
- » Ministry of Education Schools Property Reference Group
- » Ministry of Education Technical Development Group
- » Ministry of Education Tracking Meetings (monitoring progress of site plan updates and maximum roll applications)
- » Rural Education Reference Group

Ongoing liaison with sector groups formal and informal contacts and meetings took place with the following groups:

- » National Association of Principals of Catholic Secondary Schools
- » NZ Catholic Primary Principals' Association
- » New Zealand Council for Education Research
- » NZEI Principals' Council
- » New Zealand Education Institute Te Riu Roa
- » New Zealand Principals' Federation
- » New Zealand School Trustees Association
- » Parent Teacher Association of New Zealand
- » Post Primary Teachers' Association
- » PPTA Principals' Council
- » Secondary Principals' Association of New Zealand
- » Te Kura – The Correspondence School
- » Tertiary Education Commission

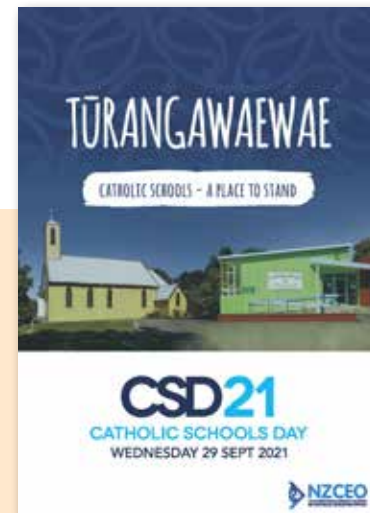
Catholic Schools Day

On Wednesday 29 September we celebrated Catholic Schools Day 2021 (CSD 21). The theme was **Tūrangawaewae: Catholic Schools – A Place to Stand.**

CSD 21 was a celebration of our Catholic schools as places of belonging, where tamariki, rangatahi, and their whānau, strengthen their sense of what it means to be Catholic, and find a place to stand. This year Catholic Schools Day came at an especially challenging time for our school communities. In late September Auckland was in Alert Level 3, and the rest of the country had recently shifted to Alert Level 2. Despite the difficult circumstances Catholic schools throughout New Zealand found exciting and meaningful ways to celebrate as a community, and to showcase their unique identity.

Our Lady of the Snows School, Methven

Our Lady Star of the Sea Catholic School, Sumner



Our Lady of the Assumption School, Christchurch



Marion College, Christchurch

Looking back over 2021 – a snapshot

- » Suzanne Aubert Catholic School, Papamoa, opened to students in term one 2021.
- » Catholic Schools Day – successfully held on 29 September 2021.
- » Aspiring Leaders two year programme (2021/22) – 27 participants attended a two-day face to face gathering in Wellington on 24 and 25 May 2021, followed by a series of online seminars and discussions.
- » Collaboration with NZSTA to develop a governance framework for Catholic school boards.
- » Approximately 300 participants enjoyed the Catholic Professional Learning and Formation Symposium Series – this was a programme of three online symposia focusing on matters of interest to Catholic educationalist.
- » First Time Principals programme – a series of short (1hr) online seminars and discussions to help form principals as the faith leader in a Catholic school.
- » NZCEOs facilitation of the Working Group to develop a framework to meet the NZCBC's decision on the new National Property Funding Pools. This work included policy and procedural development, consultation with proprietors and NZCBC and gaining support from proprietors to agree to a new scheme in 2022.
- » Learning Support Co-ordinator (LSC) spaces – the final LSC spaces were funded by the Ministry of Education over the year. Final spending totalled over \$5.5m for all eligible state integrated schools, representing 95 LSC spaces in 89 schools. For eligible Catholic schools this represents 75 spaces in 71 schools totalling \$4.6m.
- » Essential Property Maintenance Package – \$52.8m included in 2021 budget from Government for the Essential Property Maintenance Package for eligible state integrated schools.
- » Development of new strategic plan which will guide NZCEO from 2022 to 2024.
- » Successfully supported the state integrated school sector to meet the non-preference enrolment policy requirements set out by the Ministry of Education.



Looking forward to 2022 – what's coming up

- » Rebrand and refresh of Lighting New Fires.
- » Roll out of governance policy framework for Catholic school boards.
- » Video developed on the history of Integration in Aotearoa New Zealand.
- » Development of resources for new trustees on Catholic school boards.
- » Refresh Board of Trustees handbook and Catholic education documents e.g., code of ethics for staff.
- » Regular meetings with Ministry of Education senior managers to discuss matters of importance to Catholic proprietors.
- » Commencement of new School Property Funding Pools - Te Puna Waihanga for new schools and classrooms, Te Puna Tāmata for emergency remediation, National Insurance subsidy for all participating proprietors.
- » Continued administration of funds for the Essential Property Maintenance Package (EPMP) on behalf of Catholic proprietors.
- » Completion of Catholic Special Character Evaluation for Development of Aotearoa New Zealand Catholic School Hostels document.
- » The development of further programmes to support the identification, formation and development of Catholic leaders in education.
- » At the request of NZCBC and diocesan Vicars and Managers of Catholic Education, and in conjunction with NCRS, the development of a document of Catholic education to follow The Catholic Education of School-Age Children (2014).

New Zealand's Catholic Schools

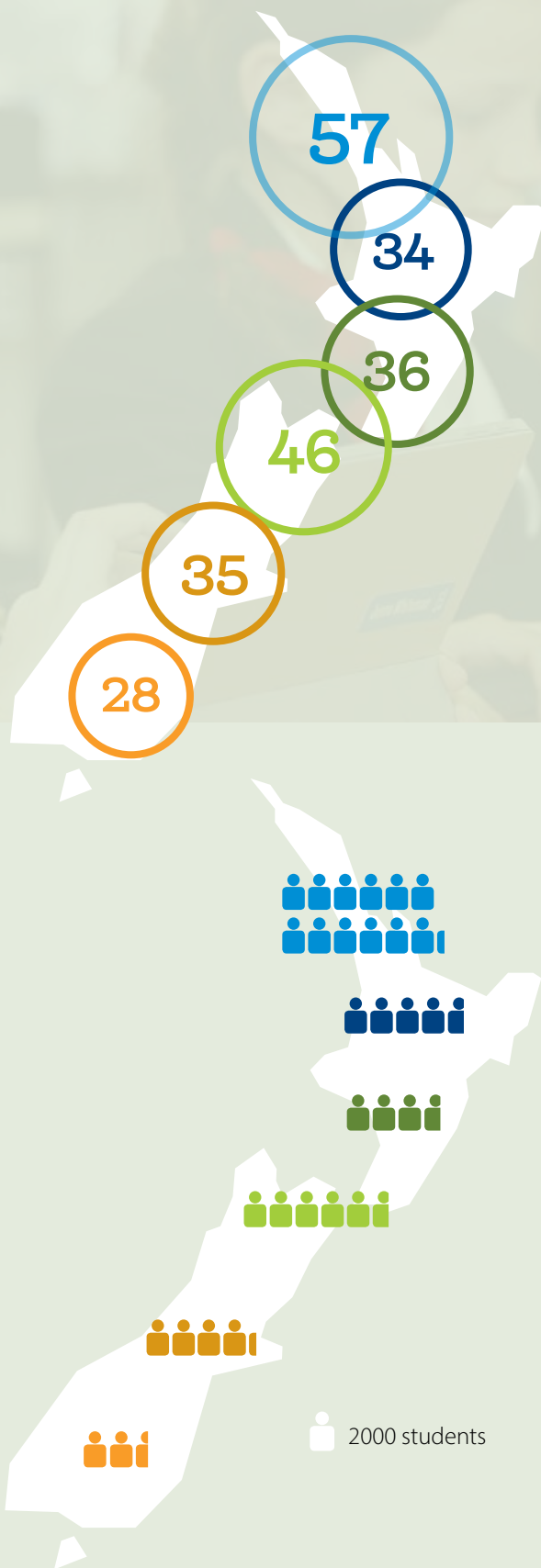
as of July 2021

There are 236 Catholic schools throughout New Zealand:

Diocese	
Auckland	57
Hamilton	34
Palmerston North	36
Wellington	46
Christchurch	35
Dunedin	28
New Zealand	236

Nationally, there were 66,635 Catholic students in New Zealand:

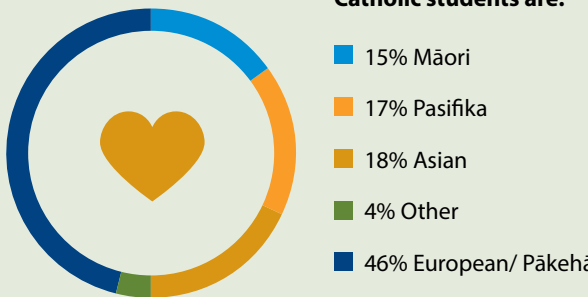
Diocese	Primary	Secondary	Total Roll
Auckland	10,640	13,722	24,362
Hamilton	5,561	4,079	9,640
Palmerston North	4,238	3,479	7,717
Wellington	6,747	4,675	11,422
Christchurch	4,680	3,846	8,526
Dunedin	2,757	2,211	4,968
New Zealand	34,623	32,012	66,635



Over the past ten years, Catholic student figures continue to increase:

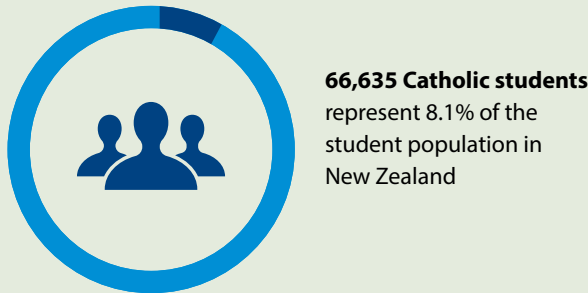
YEAR	TOTAL NO OF STUDENTS	% OF ALL STUDENTS
2012	65,010	8.6%
2013	65,143	8.5%
2014	65,364	8.5%
2015	65,744	8.5%
2016	66,499	8.4%
2017	66,722	8.3%
2018	66,888	8.3%
2019	66,762	8.1%
2020	66,875	8.1%
2021	66,635	8.1%

The Catholic school sector is ethnically diverse:



In 2021, more Catholic students attended primary than secondary schools:

STUDENT ROLL	
Secondary (Y7-13)	22,542
Secondary (Y9-13)	9,470
Full Primary (Y1-8)	23,003
Contributing (Y1-6)	11,620



NB: Figures courtesy of Ministry of Education. Figures show Total Funded Students which includes International Fee-Paying (IFP), Alternative Education and Secondary-Tertiary Students. MELAA refers to Middle Eastern, Latin American and African.

Auckland

COLLEGES

Baradene College, Remuera
Carmel College, Milford
De La Salle College, Mangere East
Liston College, Henderson
Marcellin College, Royal Oak
Marist College, Mt Albert
McAuley High School, Otahuhu
Pompallier Catholic College, Whangarei
Rosmini College, Takapuna
Sacred Heart College, Glen Innes
Sancta Maria College, Flat Bush
St Dominic's Catholic College, Henderson
St Mary's College, Ponsonby
St Paul's College, Ponsonby
St Peter's College, Epsom

PRIMARY SCHOOLS

Christ the King Catholic School, Owairaka
Good Shepherd School, Balmoral
Holy Cross Catholic School, Henderson
Holy Cross School, Papatoetoe
Holy Trinity Catholic Primary School, Takanini
Marist Catholic School, Herne Bay
Marist Primary School, Mt Albert
Monte Cecilia School, Mt Roskill
Mt Carmel Primary School, Meadowbank
Our Lady of the Sacred Heart School, Epsom
Our Lady Star of the Sea School, Howick
Pompallier Catholic School, Kaitaia
Sancta Maria Catholic Primary School, Flat Bush
St Anne's Catholic School, Manurewa
St Dominic's Catholic School, Blockhouse Bay
St Francis Catholic School, Pt Chevalier
St Francis School, Thames
St Francis Xavier Catholic School, Whangarei
St Ignatius Catholic School, St Heliers
St John the Evangelist Catholic School, Otara
St John's School, Mairangi Bay
St Joseph's Catholic School, Dargaville
St Joseph's Catholic School, Takapuna
St Joseph's School, Grey Lynn
St Joseph's School, Onehunga
St Joseph's School, Orakei
St Joseph's School, Otahuhu
St Joseph's School, Pukekohe

St Leo's Catholic School, Devonport
St Mark's Catholic School, Pakuranga
St Mary MacKillop Catholic School, Mangere
St Mary's Catholic School, Papakura
St Mary's School, Avondale
St Mary's School, Ellerslie
St Mary's School, Northcote
St Michael's Catholic School, Remuera
St Patrick's School, Panmure
St Paul's School, Massey
St Pius X Catholic School, Glen Innes
St Therese School, Three Kings
Stella Maris Primary School, Silverdale
Te Kura O Hato Hohepa te Kamura, Waitaruke

Hamilton

COLLEGES

Aquinas College, Tauranga
Campion College, Gisborne
John Paul College, Rotorua
Sacred Heart Girls' College, Hamilton
St John's College, Hillcrest

PRIMARY SCHOOLS

Bishop Edward Gaines Catholic School, Tokoroa
Marian Catholic School, Hamilton
St Anthony's Catholic School, Huntly
St Columba's Catholic School, Frankton
St Joseph's Catholic School, Fairfield
St Joseph's Catholic School, Matamata
St Joseph's Catholic School, Matata
St Joseph's Catholic School, Morrinsville
St Joseph's Catholic School, Opotiki
St Joseph's Catholic School, Paeroa
St Joseph's Catholic School, Te Aroha
St Joseph's Catholic School, Te Kuiti
St Joseph's Catholic School, Waihi
St Joseph's Catholic School, Whakatane
St Mary's Catholic School, Gisborne
St Mary's Catholic School, Otorohanga
St Mary's Catholic School, Putaruru
St Mary's Catholic School, Rotorua
St Mary's Catholic School, Tauranga
St Michael's Catholic School, Rotorua
St Patrick's Catholic School, Taumarunui
St Patrick's Catholic School, Taupo
St Patrick's Catholic School, Te Awamutu
St Paul's Catholic School, Ngaruawahia

St Peter Chanel Catholic School, Te Rapa
St Peter's Catholic School, Cambridge
St Pius X Catholic School, Melville
St Thomas More Catholic School, Mt Maunganui
Suzanne Aubert Catholic School, Papamoa

Palmerston North

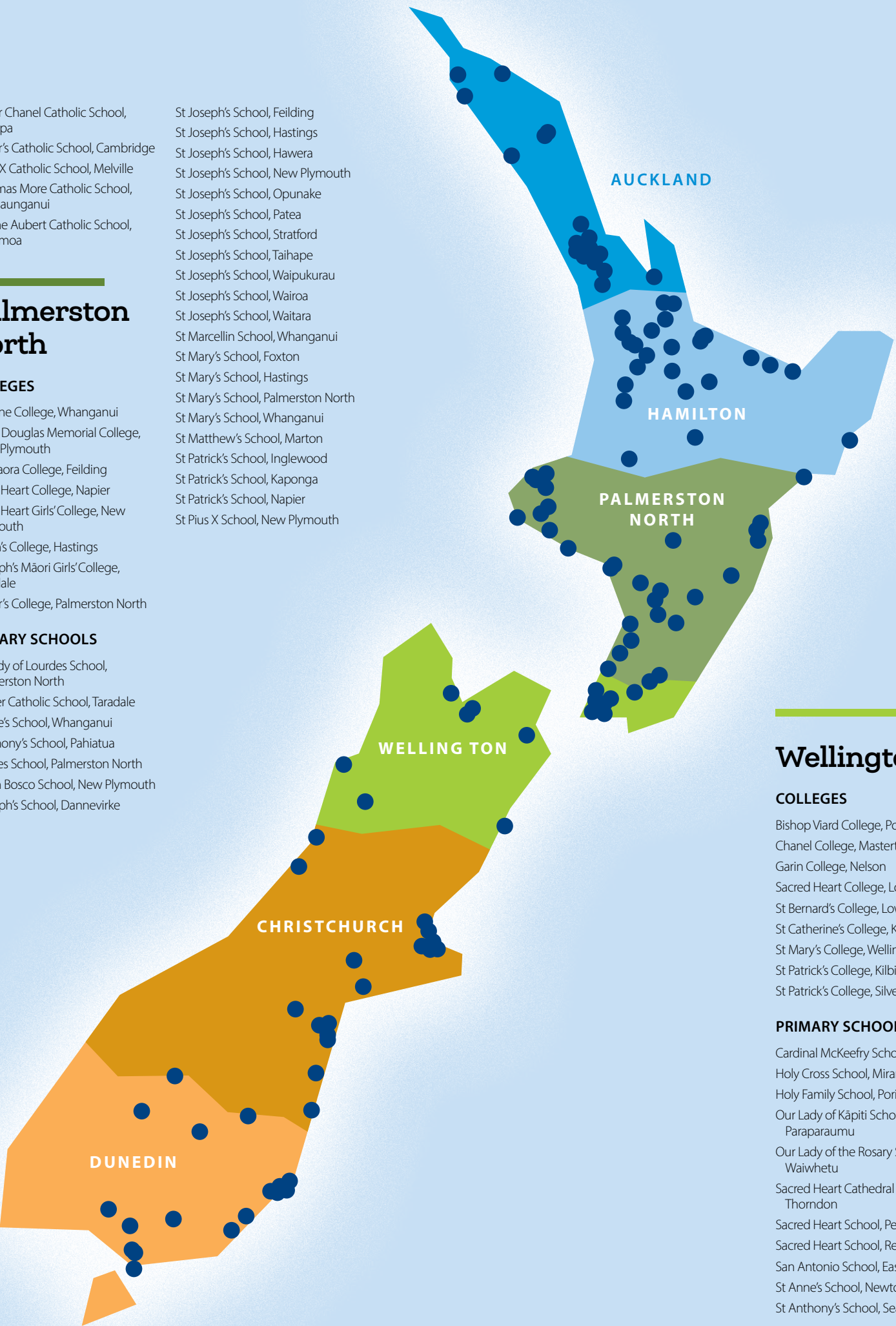
COLLEGES

Cullinane College, Whanganui
Francis Douglas Memorial College, New Plymouth
Hato Paora College, Feilding
Sacred Heart College, Napier
Sacred Heart Girls' College, New Plymouth
St John's College, Hastings
St Joseph's Māori Girls' College, Taradale
St Peter's College, Palmerston North

PRIMARY SCHOOLS

Our Lady of Lourdes School, Palmerston North
Reignier Catholic School, Taradale
St Anne's School, Whanganui
St Anthony's School, Pahiatua
St James School, Palmerston North
St John Bosco School, New Plymouth
St Joseph's School, Dannevirke

St Joseph's School, Feilding
St Joseph's School, Hastings
St Joseph's School, Hawera
St Joseph's School, New Plymouth
St Joseph's School, Opunake
St Joseph's School, Patea
St Joseph's School, Stratford
St Joseph's School, Taihape
St Joseph's School, Waipukurau
St Joseph's School, Wairoa
St Joseph's School, Waitara
St Marcellin School, Whanganui
St Mary's School, Foxton
St Mary's School, Hastings
St Mary's School, Palmerston North
St Mary's School, Whanganui
St Matthew's School, Marton
St Patrick's School, Inglewood
St Patrick's School, Kaponga
St Patrick's School, Napier
St Pius X School, New Plymouth



Wellington

COLLEGES

Bishop Viard College, Porirua
Chanel College, Masterton
Garin College, Nelson
Sacred Heart College, Lower Hutt
St Bernard's College, Lower Hutt
St Catherine's College, Kilbirnie
St Mary's College, Wellington
St Patrick's College, Kilbirnie
St Patrick's College, Silverstream

PRIMARY SCHOOLS

Cardinal McKeefry School, Wilton
Holy Cross School, Miramar
Holy Family School, Porirua
Our Lady of Kāpiti School, Paraparaumu
Our Lady of the Rosary School, Waiwhetu
Sacred Heart Cathedral School, Thorndon
Sacred Heart School, Petone
Sacred Heart School, Reefton
San Antonio School, Eastbourne
St Anne's School, Newtown
St Anthony's School, Seatoun

St Benedict's School, Khandallah
St Bernadette's School, Naenae
St Bernard's School, Brooklyn
St Brendan's School, Heretaunga
St Brigid's School, Johnsonville
St Canice's School, Westport
St Claudine Thevenet School, Wainuiomata
St Francis de Sales School, Island Bay
St Francis Xavier School, Tawa
St Joseph's School, Kaikoura
St Joseph's School, Levin
St Joseph's School, Nelson
St Joseph's School, Upper Hutt
St Mary's School, Blenheim
St Mary's School, Carterton
St Michael's School, Taita
St Patrick's School, Kilbirnie
St Patrick's School, Masterton
St Paul's School, Richmond
St Peter and Paul School, Lower Hutt
St Peter Chanel School, Motueka
St Peter Chanel School, Otaki
St Pius X School, Titahi Bay
St Teresa's School, Featherston
St Teresa's School, Karori
St Theresa's School, Plimmerton

Christchurch

COLLEGES

Catholic Cathedral College, Christchurch
John Paul II High School, Greymouth
Marian College, Christchurch
Roncalli College, Timaru
St Bede's College, Christchurch
St Thomas of Canterbury College, Christchurch
Villa Maria College, Christchurch

PRIMARY SCHOOLS

Christ The King School, Burnside
New Brighton Catholic School, New Brighton
Our Lady of the Assumption School, Hoon Hay
Our Lady of the Snows School, Methven
Our Lady of Victories School, Sockburn
Our Lady Star of the Sea School, Sumner
Sacred Heart School, Addington
Sacred Heart School, Timaru
St Albans Catholic School, St Albans
St Anne's School, Woolston

St Bernadette's School, Hornby
St Francis of Assisi Catholic School, Mairehau
St James School, Aranui
St Joseph's School, Ashburton
St Joseph's School, Fairlie
St Joseph's School, Papanui
St Joseph's School, Pleasant Point
St Joseph's School, Rangiora
St Joseph's School, Temuka
St Joseph's School, Timaru
St Mary's School, Christchurch
St Mary's School, Hokitika
St Patrick's School, Bryndwr
St Patrick's School, Greymouth
St Patrick's School, Kaiapoi
St Patrick's School, Waimate
St Peter's School, Beckenham
St Teresa's School, Riccarton

Dunedin

COLLEGES

Kavanagh College, Dunedin
St Kevin's College, Oamaru
St Peter's College, Gore
Verdon College, Invercargill

PRIMARY SCHOOLS

Holy Family School, Wanaka
Sacred Heart School, Dunedin
Sacred Heart School, Waikivi
St Bernadette's School, Forbury
St Brigid's School, Tainui
St Francis Xavier School, Mornington
St Gerard's School, Alexandra
St John's School, Ranfurly
St Joseph's Cathedral School, Dunedin
St Joseph's School, Balclutha
St Joseph's School, Invercargill
St Joseph's School, Oamaru
St Joseph's School, Port Chalmers
St Joseph's School, Queenstown
St Mary's School, Dunedin
St Mary's School, Gore
St Mary's School, Milton
St Mary's School, Mosgiel
St Patrick's School, Invercargill
St Patrick's School, Nightcaps
St Peter Chanel School, Green Island
St Teresa's School, Bluff
St Theresa's School, Invercargill
St Thomas' School, Winton

Report of the Board of Directors

of New Zealand Catholic Education Office Limited

The Board of Directors of New Zealand Catholic Education Office Limited comprises:

- » Geoffrey Ricketts (*Chairperson*)
- » Jenny Gordon
- » Archbishop Paul Martin
- » Bishop Stephen Lowe
- » John Gallaher (*Deputy Chairperson*)
- » Graeme Roil
- » James van Schie
- » Stephen Grey

In respect of each Director of the Board no remuneration or benefit of any other value has been received by that Director during the period.

Nature of the Company Business

The New Zealand Council of Proprietors of Catholic Integrated Schools set up a charitable limited liability company, New Zealand Catholic Education Office Limited, to run its Office. The staff of the Office are responsible on a day-to-day basis to the Board of Directors of the Company. Members of the New Zealand Council of Proprietors of Catholic Integrated Schools are the shareholders of the company; this includes the Bishops as major shareholders.

The Office also acts as the Secretariat for the Association of Proprietors of Integrated Schools, which represents Proprietors of all New Zealand's state-integrated schools.

Auditor: Deloitte

Solicitor: Chapman Tripp

Company Number: WN/1042025

Registered Office

New Zealand Catholic Education Office Limited
PO Box 12307
Wellington 6144

Approval of Financial Statements by Directors

The Directors of New Zealand Catholic Education Office Limited are pleased to present the group financial statements for the year ended 31 December 2021.



Geoffrey Ricketts
Chairperson



Dr Kevin Shore
Chief Executive Officer

For and on behalf of the Board of Directors
09 March 2022

Summary Consolidated Financial Statements

of New Zealand Catholic Education Office Limited
for the year ended 31 December 2021



Summary Consolidated Statement of Financial Position

as at 31 December 2021

	GROUP		NZCEO	
	2021 \$(000)	2020 \$(000)	2021 \$(000)	2020 \$(000)
Total equity	1,243	1,055	905	779
Cash and cash equivalents	3,611	269	3,497	131
Term deposits	642	634	642	634
Loans to Participating Proprietors	2,014	1,909	-	-
Other	81	57	97	56
Total current assets	6,348	2,869	4,236	821
Loans to Participating Proprietors	23,509	24,429	-	-
Other	38	50	38	50
Total non-current assets	23,547	24,479	38	50
Loan from Catholic Education Trust Fund	7,233	8,028	-	-
Loan from Bank of New Zealand	2,000	1,010	-	-
Essential Property Maintenance Package funding payable	2,800	-	2,800	-
Other	689	178	569	92
Total current liabilities	12,722	9,216	3,369	92
Loan from Bank of New Zealand	15,930	17,077	-	-
Total non-current liabilities	15,930	17,077	-	-
Net assets	1,243	1,055	905	779

Summary Consolidated Statement of Comprehensive Income

of New Zealand Catholic Education Office Limited
for the year ended 31 December 2021

	GROUP		NZCEO	
	2021 \$(000)	2020 \$(000)	2021 \$(000)	2020 \$(000)
Interest income	1,100	1,325	7	15
Proprietor levies	864	834	864	834
Cost recoveries	98	41	193	137
Sponsorship and other income	35	38	35	38
Total income	2,097	2,238	1,099	1,024
Interest expense	859	1,147	-	-
Employment	663	703	663	703
Audit, legal and professional fees	188	87	110	52
Administration and other	27	22	28	30
Computer	26	27	26	27
Depreciation and amortisation	15	19	15	19
Meetings - Proprietors	35	23	35	23
Motor vehicle and travel	47	39	47	39
Principals' Initiative and special projects	-	37	-	37
Publications and promotions	1	12	1	12
Rent	48	48	48	48
Total expenditure	1,909	2,164	973	990
Total comprehensive income	188	74	126	34

Summary Consolidated Statement of Movements in Equity

of New Zealand Catholic Education Office Limited
for the year ended 31 December 2021



	Retained Earnings \$(000)	Special Reserves \$(000)	Share Capital \$(000)	Total \$(000)
GROUP				
Opening balance 1 January 2020	711	171	99	981
Total comprehensive income	74	-	-	74
Transfer from/(to) Reserves	7	(7)	-	-
Balance at 31 December 2020	792	164	99	1,055
Total comprehensive income	188	-	-	188
Transfer from/(to) Reserves	(30)	30	-	-
Balance at 31 December 2021	950	164	99	1,243
NZCEO				
Opening balance 1 January 2020	475	171	99	745
Total comprehensive income	34	-	-	34
Transfer from/(to) Reserves	7	(7)	-	-
Balance at 31 December 2020	516	164	99	779
Total comprehensive income	126	-	-	126
Transfer from/(to) Reserves	(30)	30	-	-
Balance at 31 December 2021	612	194	99	905

Summary Consolidated Statement of Cash Flows

of New Zealand Catholic Education Office Limited
for the year ended 31 December 2021

	GROUP		NZCEO	
	2021 \$(000)	2020 \$(000)	2021 \$(000)	2020 \$(000)
Total cash flows from operating activities	3,676	521	3,378	85
Total cash flows from investing activities	803	(3,089)	(11)	(25)
Total cash flows from financing activities	(1,137)	2,572	-	-
Total cash flows	3,342	4	3,367	60

Notes to the Summary Consolidated Financial Statements

for the year ended 31 December 2021

These summary consolidated financial statements comprise the summary financial statements of New Zealand Catholic Education Office Limited (NZCEO) and its wholly-owned subsidiary NZCEO Finance Limited (NZCEO Finance) (together - "Group").

These summary consolidated financial statements have been extracted from the full consolidated financial statements for the year ended 31 December 2021.

The full consolidated financial statements for the year ended 31 December 2021 were authorised for issue by the Board on 09 March 2022. The full consolidated financial statements for the year ended 31 December 2021 have been audited and received an unqualified audit opinion.

The full consolidated financial statements for the year ended 31 December 2021 were prepared under Tier 2 PBE Standards RDR (NFP). These summary consolidated financial statements do not include all the disclosures provided in the full consolidated financial statements and cannot be expected to provide as complete an understanding as provided by the full consolidated financial statements. These summary consolidated

financial statements comply with PBE Standards as they relate to summary financial statements.

The presentation currency is New Zealand dollars rounded to the nearest thousand dollars.

Copies of the full audited consolidated financial statements for the year ended 31 December 2021 are available on our website www.nzceo.org.nz.

Related party transactions

NZCEO provides administration services to its wholly-owned subsidiary NZCEO Finance, and to the Catholic Education Trust Fund and the National Attendance Dues and Capital Indebtedness Sharing Scheme on behalf of Participating Proprietors. Administration costs for NZCEO Finance (2021 \$94,621; 2020 \$95,962), the Scheme (2021 \$27,035; 2020 \$27,418) and the Catholic Education Trust Fund (2021 \$13,517; 2020 \$13,709) were initially paid by NZCEO Limited and recovered by way of reimbursement.

During the year, NZCEO Finance took out loans from the Catholic Education Trust Fund and on-lent that money to the Scheme to fund any shortfall between the national attendance dues received from Participating Proprietors and the debt servicing paid on behalf of the Participating Proprietors.

Loans are provided by NZCEO Finance to Participating Proprietors of the Scheme. The Participating Proprietors of the Scheme are also shareholders of NZCEO.

Proprietor levies are received from Catholic state integrated school Proprietors who are also shareholders of NZCEO Limited.

During 2021 EPMP funding of \$590,270 was distributed to Catholic state integrated school Proprietors who are also shareholders of NZCEO Limited.

Consultants and specialised office support includes \$19,370 paid to a director of NZCEO Limited for administration of the EPMP funding distribution process.

NZCEO Limited rents office space from a shareholder at commercial rates.

Loan from Bank of New Zealand

As at 31 December 2018, NZCEO Finance was technically in default of one of the Term Loan Facility covenants. During 2020 and again in 2021, BNZ have agreed to waive their right to cancel the Term Loan Facility and will not demand immediate repayment for at least the next 12 months.

Commitments

Operating lease commitments are payable as follows:

	GROUP		NZCEO	
	2021 \$(000)	2020 \$(000)	2021 \$(000)	2020 \$(000)
Less than one year	52	52	52	52
Between one and five years	196	200	196	200
More than five years	77	125	77	125
	325	377	325	377

Subsequent events

Subsequent to 31 December 2021, NZCEO Limited received notification that its rented office space may become uninhabitable due to an engineering report that the building falls under the seismic strength requirements of the New Building Standard. This report is undergoing a peer evaluation and the building remains closed pending the outcome of that evaluation. NZCEO Limited staff have been working remotely so this does not materially impact our ongoing operations.

Going Concern

The going concern assumption has been adopted by the Directors, given the reasonable expectation that the Group will have adequate resources to continue operations for the foreseeable future. Consideration was given to the following factors:

- » Financial modelling for the Scheme, which includes forecast attendance dues and debt servicing, shows that the Scheme will generate sufficient cash flows to support all debt servicing obligations, including repayment of the loan from NZCEO Finance.
- » The receipt of attendance dues is subject to an underwrite from the Catholic Bishops of the five participating dioceses.
- » A Letter of Financial Support has been received from the Catholic Education Trust Fund to enable NZCEO Finance to meet its cash flow commitments should it be required.
- » Directors have reviewed all the assumptions in the financial model and are satisfied that the going concern assumption can be applied.

Independent Auditor's Report

on the Summary Consolidated Financial Statements

Deloitte.

Independent Auditor's Report continued

To the Shareholders of New Zealand Catholic Education Office Limited

Opinion

The summary consolidated financial statements of New Zealand Catholic Education Office Limited (the 'Company') and its subsidiary (together the 'Group'), which comprise the summary consolidated statement of financial position as at 31 December 2021, and the summary consolidated statement of comprehensive income, summary consolidated statement of movements in equity and summary consolidated statement of cash flows for the year then ended, and related notes, are derived from the audited consolidated financial statements of the Group for the year ended 31 December 2021.

In our opinion, the accompanying summary consolidated financial statements, on pages 21 to 25, are consistent, in all material respects, with the audited consolidated financial statements, in accordance with PBE FRS 43: *Summary Financial Statements* issued by the New Zealand Accounting Standards Board.

Summary consolidated financial statements

The summary consolidated financial statements do not contain all the disclosures required by Public Benefit Entity Standards Reduced Disclosure Regime. Reading the summary consolidated financial statements and the auditor's report thereon, therefore, is not a substitute for reading the audited consolidated financial statements and the auditor's report. The summary consolidated financial statements and the audited consolidated financial statements do not reflect the effects of events that occurred subsequent to the date of our report on the audited consolidated financial statements.

The audited consolidated financial statements and our report thereon

We expressed an unmodified audit opinion on the audited consolidated financial statements in our report dated 09 March 2022.

Board of Directors' responsibility for the summary consolidated financial statements

The directors are responsible on behalf of the Group for the preparation of the summary consolidated financial statements in accordance with PBE FRS 43: *Summary Financial Statements*.

Auditor's responsibilities

Our responsibility is to express an opinion on whether the summary consolidated financial statements are consistent, in all material respects, with the audited consolidated financial statements based on our procedures, which were conducted in accordance with International Standard on Auditing (New Zealand) ('ISA (NZ)') 810 (Revised): *Engagements to Report on Summary Financial Statements*.

Other than in our capacity as auditor and the provision of model advisory services, we have no relationship with or interests in the Company or its subsidiary. These services have not impaired our independence as auditor of the Company and Group.

Restriction on use

This report is made solely to the Company's shareholders, as a body, in accordance with Section 207B of the Companies Act 1993. Our audit has been undertaken so that we might state to the Company's shareholders those matters we are required to state to them in an auditor's report and for no other purpose. To the fullest extent permitted by law, we do not accept or assume responsibility to anyone other than the Company's shareholders as a body, for our audit work, for this report, or for the opinions we have formed.

Deloitte Limited

Wellington, New Zealand

09 March 2022

Directory

Address

1st Floor
The Catholic Centre
22–30 Hill Street
Wellington 6011

PO Box 12307
Wellington 6144

Telephone (04) 496 1739
Email nzceooffice@nzceo.org.nz
Website www.nzceo.org.nz

Chairperson

Geoffrey Ricketts

Chief Executive Officer

Dr Kevin Shore

Senior Management

Heather Richardson, Chief Financial Officer
Karen Raitt, Manager, Operations and Projects
Rosalie Connors, Manager, Special Character and Publications

Upgrading your playground surface or school multi-use court?



WE ARE ARTIFICIAL TURF SPECIALISTS, SERVICING NZ WIDE.
Multi-use courts. Playground surfacing. Cricket wickets. Courtyards. Landscaping areas.
P. 0508 836 647 E. info@teamturf.co.nz www.teamturf.co.nz

Keeping schools safe

The security needs within the education industry are complex. Not only must schools ensure the safety of students, staff, and visitors, but they also need to keep school property and shared facilities secure, whilst complying with health and safety requirements. Gallagher understands these challenges and have supported schools across New Zealand for more than 20 years.



Keep people safe

- Secure campus access
- Rapid evacuation & lockdown
- Quick, accurate communication



Optimise facility use

- Streamlined resource utilisation
- Simplified administration
- Reduced costs



Protect assets and data

- Third party integration (HR, CCTV)
- Agile locker management
- Intelligent alarm monitoring



Scale your security

- Scale your solution as your school grows
- Operate multiple sites from one system



Ensure compliance

- Comply with health & safety regulations
- Powerful reporting for business policies & processes



Go Mobile

- Use a mobile device just like an access card
- Flexibility to monitor and manage your campus from anywhere

Talk to our team today

Whatever your requirements, Gallagher will work with you to provide a bespoke solution that best meets the needs of your school.



sales.nz@security.gallagher.com



07 828 9800

security.gallagher.com/Industries/Education



