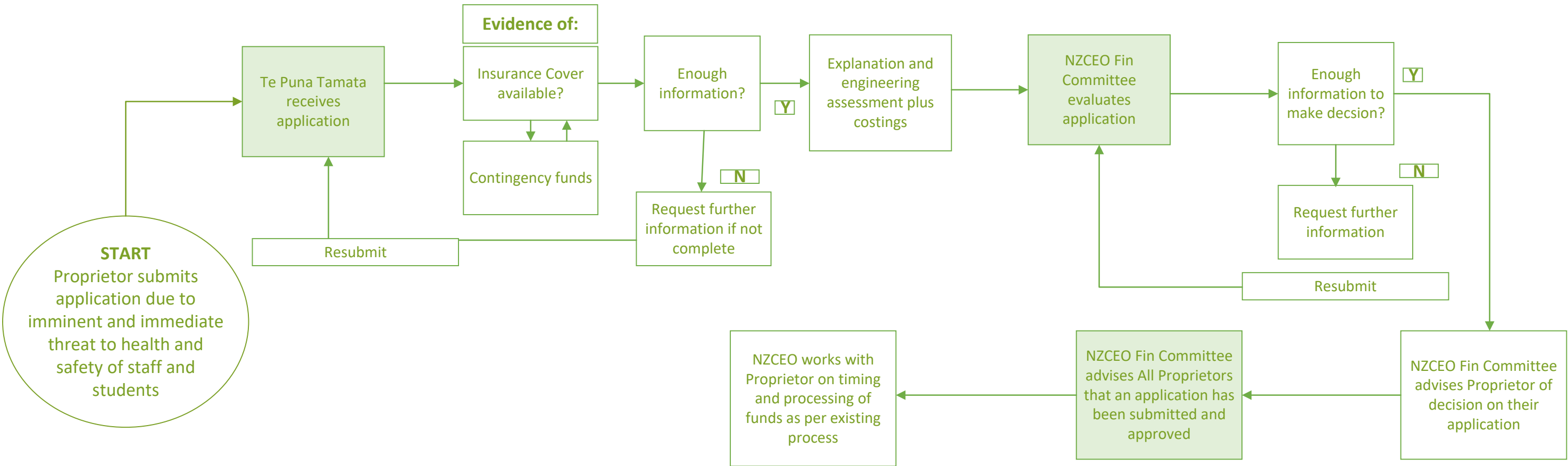


PROCESS TO MAKE APPLICATION TO TE PUNA TAMATA EMERGENCY POLICY ONE FUND



NZCEO will carry out a post implementation review of the function and effectiveness of the Te Puna Tamata Emergency Policy One Funding Scheme after two years of operation

ASSUMPTIONS:

- Applications are processed as they are received
- Decisions will be made within maximum 2 months of application if all evidence and information provided meets requirements
- Any funds unspent will be recovered
- Proprietors have the right to seek a review of if their application unsuccessful